



# Stat4 (phospho Tyr693) Polyclonal Antibody

<b>Catalog No</b>	YP-Ab-01281
<b>Isotype</b>	IgG
<b>Reactivity</b>	Human;Mouse;Rat;Monkey
<b>Applications</b>	WB;IHC;IF;IP;ELISA
<b>Gene Name</b>	STAT4
<b>Protein Name</b>	Signal transducer and activator of transcription 4
<b>Immunogen</b>	The antiserum was produced against synthesized peptide derived from human STAT4 around the phosphorylation site of Tyr693. AA range:660-709
<b>Specificity</b>	Phospho-Stat4 (Y693) Polyclonal Antibody detects endogenous levels of Stat4 protein only when phosphorylated at Y693.
<b>Formulation</b>	Liquid in PBS containing 50% glycerol, 0.5% BSA and 0.02% sodium azide.
<b>Source</b>	Polyclonal, Rabbit,IgG
<b>Purification</b>	The antibody was affinity-purified from rabbit antiserum by affinity-chromatography using epitope-specific immunogen.
<b>Dilution</b>	WB: 1/500 - 1/2000. IHC: 1/100 - 1/300. Immunoprecipitation: 2-5 ug/mg lysate. ELISA: 1/5000.. IF 1:50-200
<b>Concentration</b>	1 mg/ml
<b>Purity</b>	≥90%
<b>Storage Stability</b>	-20°C/1 year
<b>Synonyms</b>	STAT4; Signal transducer and activator of transcription 4
<b>Observed Band</b>	86kD
<b>Cell Pathway</b>	Cytoplasm. Nucleus. Translocated into the nucleus in response to phosphorylation.
<b>Tissue Specificity</b>	Brain,Kidney,Pancreas,Spleen,Testis,Uterus,
<b>Function</b>	disease:Genetic variations in STAT4 are associated with susceptibility to rheumatoid arthritis (RA) [MIM:180300]. Rheumatoid arthritis is a complex, multifactorial disorder. It is one of the most common autoimmune diseases and it is characterized by inflammation of synovial tissue and joint destruction.,disease:Genetic variations in STAT4 are associated with susceptibility to systemic lupus erythematosus type 11 (SLEB11) [MIM:612253]. Systemic lupus erythematosus (SLE) is a chronic autoimmune disease with a complex genetic basis. SLE is an inflammatory, and often febrile multisystemic disorder of connective tissue characterized principally by involvement of the skin, joints, kidneys, and serosal membranes. It is thought to represent a failure of the regulatory mechanisms of the autoimmune system.,function:Carries out a dual function: signal transduction and activation of transcription. I
<b>Background</b>	The protein encoded by this gene is a member of the STAT family of transcription factors. In response to cytokines and growth factors, STAT family members are



phosphorylated by the receptor associated kinases, and then form homo- or heterodimers that translocate to the cell nucleus where they act as transcription activators. This protein is essential for mediating responses to IL12 in lymphocytes, and regulating the differentiation of T helper cells. Mutations in this gene may be associated with systemic lupus erythematosus and rheumatoid arthritis. Alternate splicing results in multiple transcript variants that encode the same protein. [provided by RefSeq, Aug 2011],

#### matters needing attention

Avoid repeated freezing and thawing!

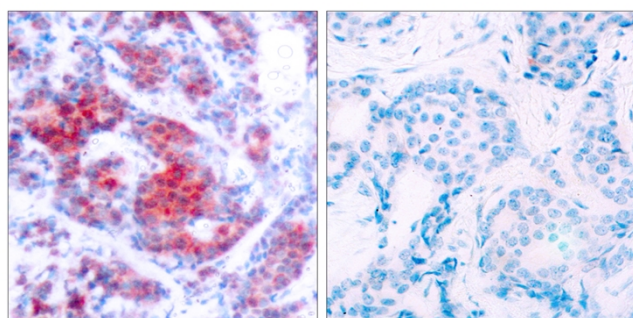
#### Usage suggestions

This product can be used in immunological reaction related experiments. For more information, please consult technical personnel.

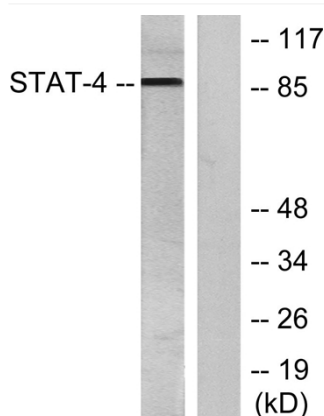
## Products Images



Western Blot analysis of various cells using Phospho-Stat4 (Y693) Polyclonal Antibody diluted at 1:2000



Immunohistochemistry analysis of paraffin-embedded human breast carcinoma, using STAT4 (Phospho-Tyr693) Antibody. The picture on the right is blocked with the phospho peptide.



Western blot analysis of lysates from HeLa cells treated with IL-4, using STAT4 (Phospho-Tyr693) Antibody. The lane on the right is blocked with the phospho peptide.